

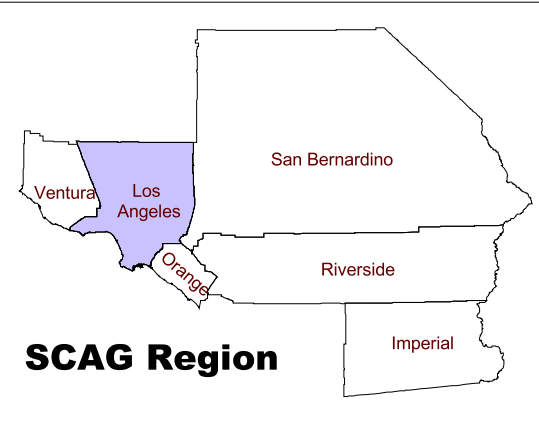
# 2000 Los Angeles County Population Density

Persons per Square Mile by Tract

- Less than 5753
- 5753 - 9825
- 9825 - 16159
- 16159 or more

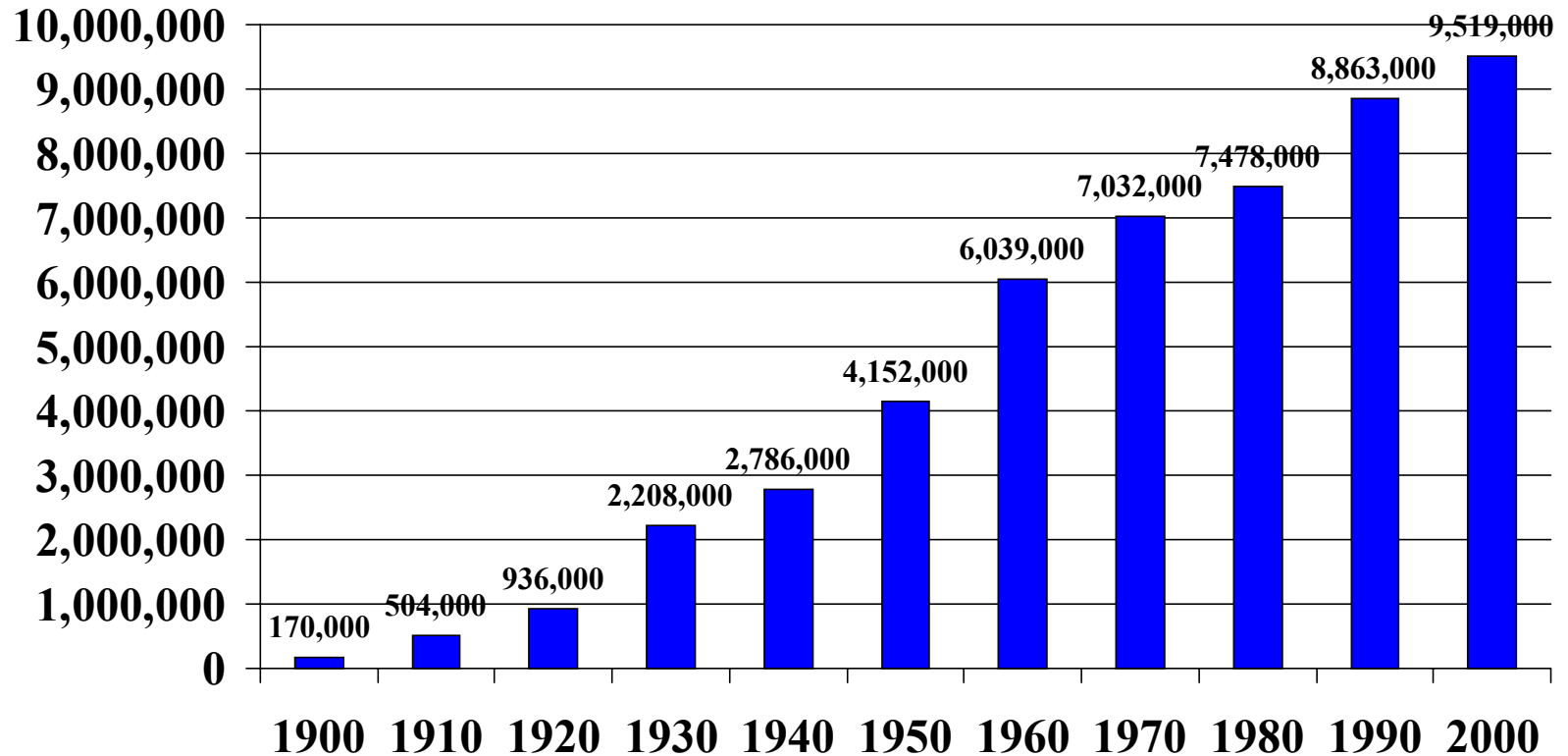
Source: Census 2000  
Thomas Bros.

- Freeway
- Highway
- Counties
- Port
- Airport

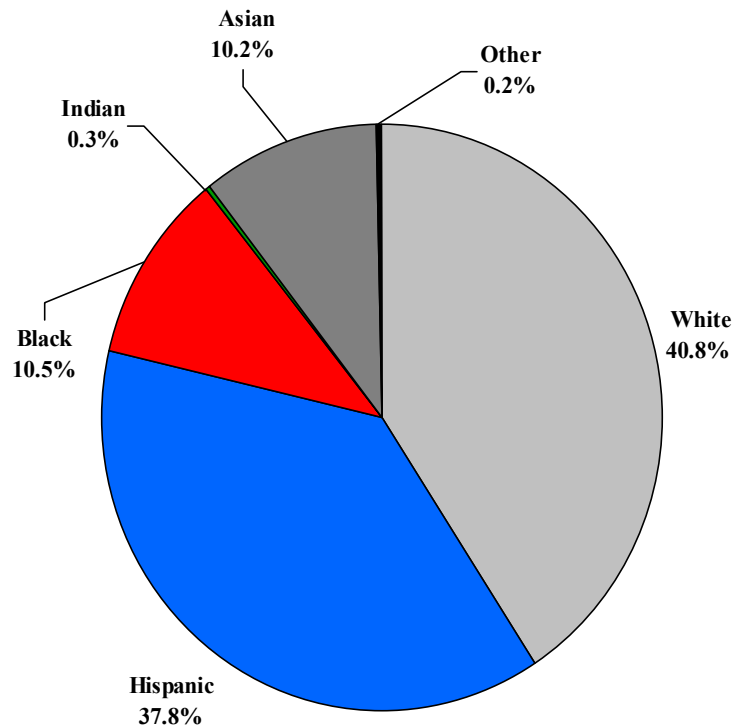


# A Century of Growth

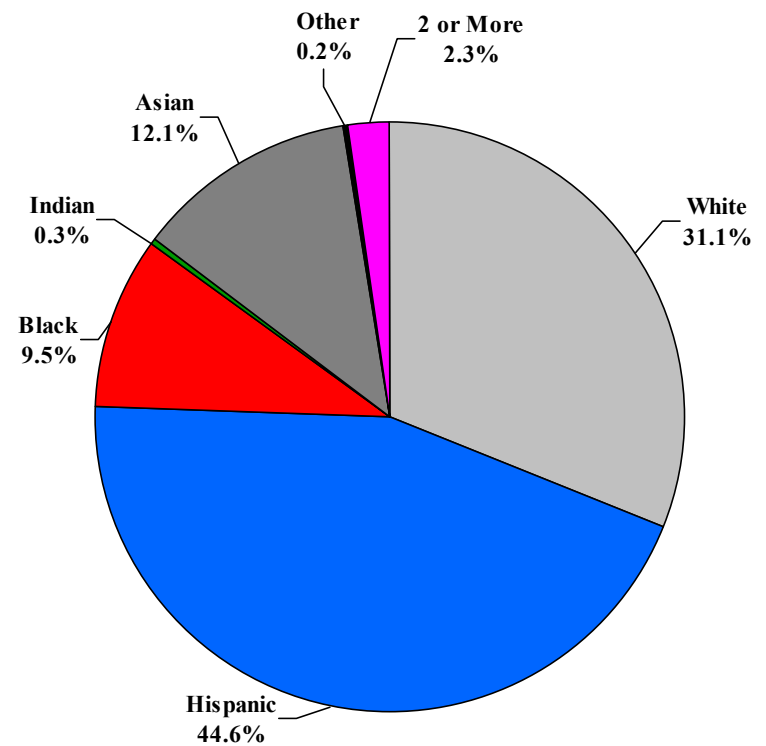
Los Angeles County Population 1900 - 2000



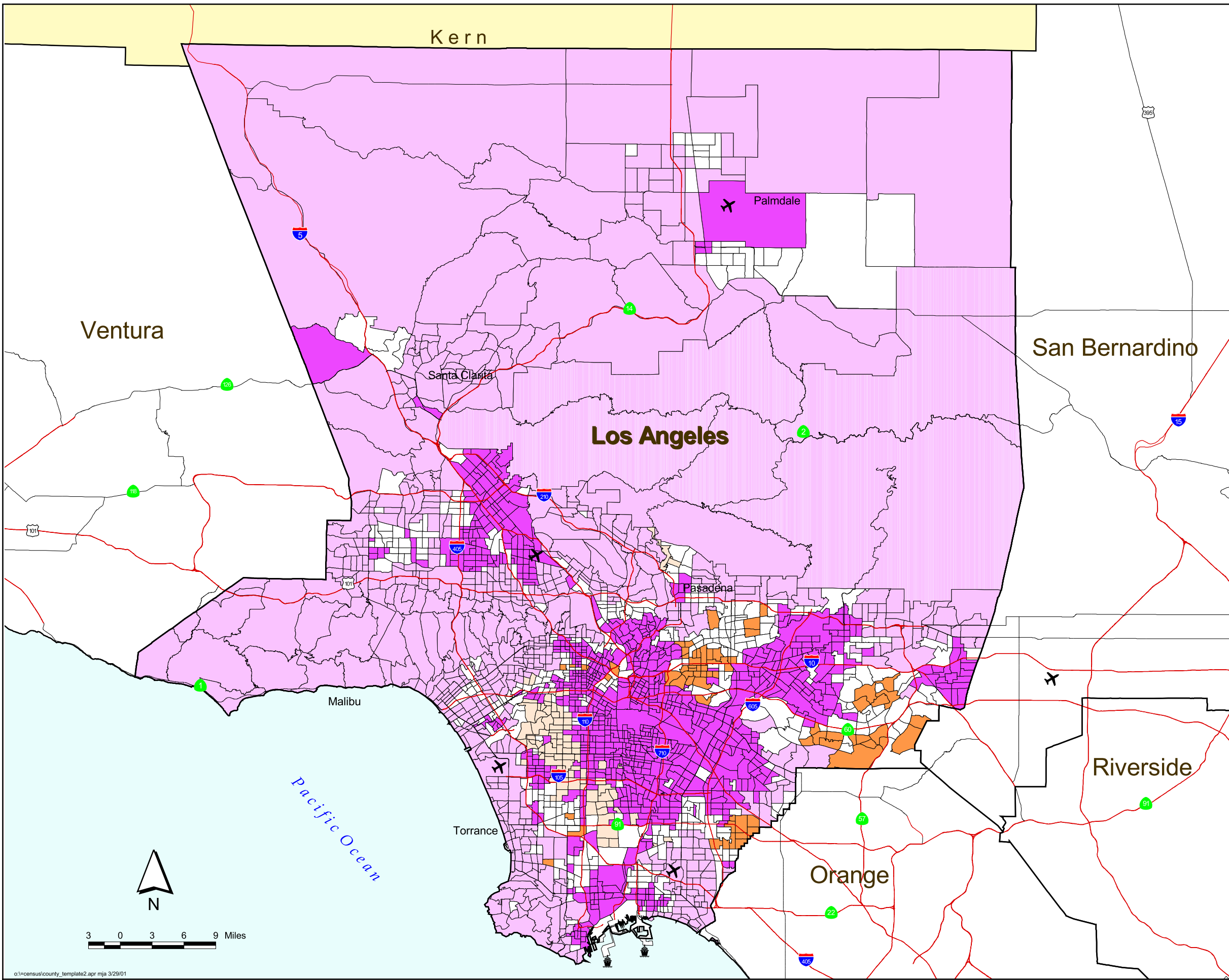
# Ethnic Composition of Los Angeles County



1990



2000



# 2000 Los Angeles County Percent Ethnicity

- No Majority Group
- Hispanic
- White
- African American
- Asian
- Multi-Racial

Source: Census 2000  
Thomas Bros.

- Freeway
- Highway
- Counties
- Port
- Airport



**SCAG Region**

 SOUTHERN CALIFORNIA  
ASSOCIATION OF GOVERNMENTS